

# FLEXSTAND



## FlexStand Operator Interface Reference Manual

## Contents

1	PREFACE .....	4
1.1	General.....	4
1.2	Abbreviations.....	4
1.3	References .....	4
2	SYSTEM REQUIREMENTS FOR FLEXSTAND OPERATOR INTERFACE .....	5
3	OVERVIEW .....	6
4	GETTING STARTED .....	8
4.1	Download .....	8
4.2	Installation.....	8
4.3	Running FlexStand .....	9
5	CREATING A CUSTOM OPERATOR INTERFACE.....	12
5.1	Copy example.....	12
5.2	Modify FlexStand_OI.ini .....	13
5.3	Modify Plugins .....	13
5.4	Modify plug-in list.....	14
5.5	Run new operator interface .....	14
6	FLEXSTAND OI CONFIGURATION TOOL.....	15
6.1	Screen settings .....	15
6.2	Paths .....	16
6.3	Plugins.....	16
6.4	Menu config.....	17
7	TEMPLATES .....	20
8	FLEXSTAND REFERENCE .....	21
8.1	LabVIEW palette .....	21
8.2	Callbacks .....	22
8.2.1	ReadCustomSetup callback.....	23
8.3	FlexStand OI .ini file .....	24
8.3.1	[FlexStand_OI] .....	24
8.3.2	[Callbacks] .....	24
8.3.3	[SplashScreen] .....	24
8.3.4	[Settings].....	24
8.4	Plug-ins .....	25
8.4.1	Plug-in overview .....	25
8.4.2	Plug-in contents .....	25
8.4.2.1	Event handler .....	25
8.4.2.2	TestStand buttons .....	26

8.4.2.3	Views .....	27
8.4.2.4	Status bar .....	28
8.5	Menubar .....	31
8.6	Language translation .....	33
8.6.1	Menu translation .....	33
8.6.2	Tab names translation .....	33
8.6.3	Plug-in string translation .....	34
8.6.4	Translation during execution .....	34
8.6.5	TestStand resource string method .....	34
9	DEPLOYMENT OF FLEXSTAND OI .....	36
9.1	TestStand Deployment .....	36
9.2	TestStand Settings .....	37
9.3	FlexStand OI Run-Time .....	37
9.4	FlexStand Operator Interface and Sequence files .....	37
9.5	Configuring FlexStand .....	38
10	SUPPORT .....	39

# 1 Preface

## 1.1 General

The flexible TestStand Operator Interface makes it possible to significantly reduce the development time of operator interfaces. Only basic LabVIEW and TestStand skills are required.

By using FlexStand you can create simple or advanced operator interfaces for TestStand using only basic LabVIEW programming. A specially designed interface (API) hides all the complex TestStand properties and methods that usually make the task of creating operator interfaces hard. FlexStand integrates fully into the LabVIEW development environment including a tools palette and examples.

FlexStand allows you to create dynamic operator interfaces that fit the tasks for the device to be tested. The operator interface can even be changed during the test, for instance when a barcode is scanned.

A number of tabs, that can change automatically or by user control, provide the operator with more or less information based on your immediate requirements.

As the FlexStand operator interface automatically resizes to the size of the LabVIEW front panels, the programmer has full control over the overall layout. This helps the programmer to allocate more space for some information and less for other.

By using a plug-in structure all code can be shared between test stations, which make reuse a simple and natural task.

This manual describes how to use the Software Development Kit (SDK) for the FlexStand Operator Interface for TestStand. The manual describes in details how to customize the FlexStand operator interface. This also includes a description of the frameworks and event handling used in the LabVIEW plug-ins.

The FlexStand Operator interfaces comes in two packages: One for developing the FlexStand Operator interfaces and one for use during deployment (Run-time version). Refer to section 9 for a description of the FlexStand OI Run-time for deployment.

## 1.2 Abbreviations

<b>Abbreviation</b>	<b>Description</b>
OI	Operator Interface
SDK	Software Development Kit
TS	TestStand sequencer by National Instruments

## 1.3 References

<b>Ref.</b>	<b>Name</b>	<b>Location</b>
[1]	NI TestStand Reference Manual	<a href="http://www.ni.com">www.ni.com</a>
[2]	NI TestStand Help	Start menu
[3]	FlexStand home page	<a href="http://www.flexstand.eu">www.flexstand.eu</a>

## 2 System requirements for FlexStand Operator Interface

The following system components must be installed on the system before FlexStand is installed.

Operating system	Windows XP or Windows 7 (32 bit or 64 bit)
TestStand version	2010 SP1 (4.5.1)
LabVIEW version (Development system only required for development of operator interface components)	2011 (11.0)

When using Windows7 64 bit the LabVIEW version used must be LabVIEW 32 bit.

### 3 Overview

The FlexStand operator interface consists of three main parts: Top plug-in, Main plug-in and bottom plug-in. The main plug-ins can contain more plug-ins organized in tabs. Each plug-in is a LabVIEW VI where the front panel is shown as a plug-in and the code is executed concurrently. The plug-ins is shown in Figure 1.

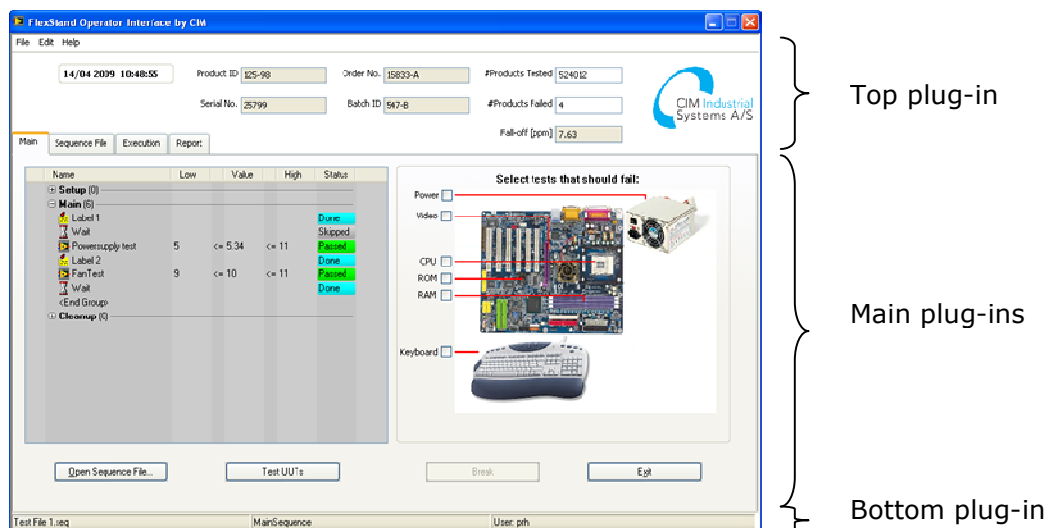


Figure 1: Plug-ins overview

FlexStand automatically adapts the size of the plug-in to the size of the front panel of the VI. By using different sizes of the front panels the FlexStand operator interface can be modified as shown in Figure 2.

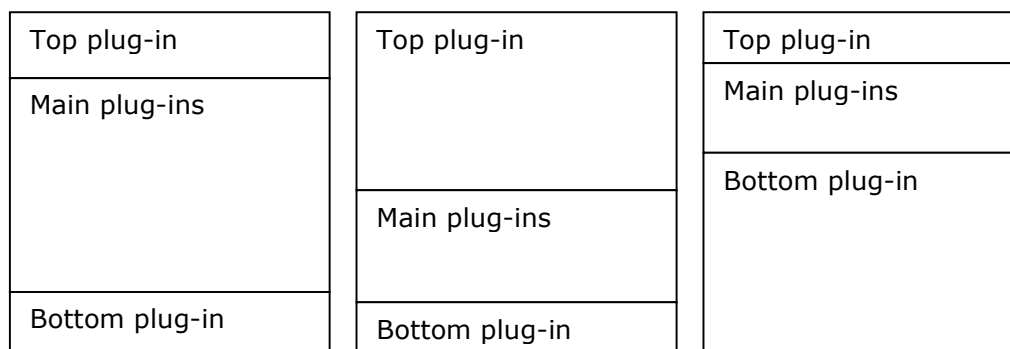
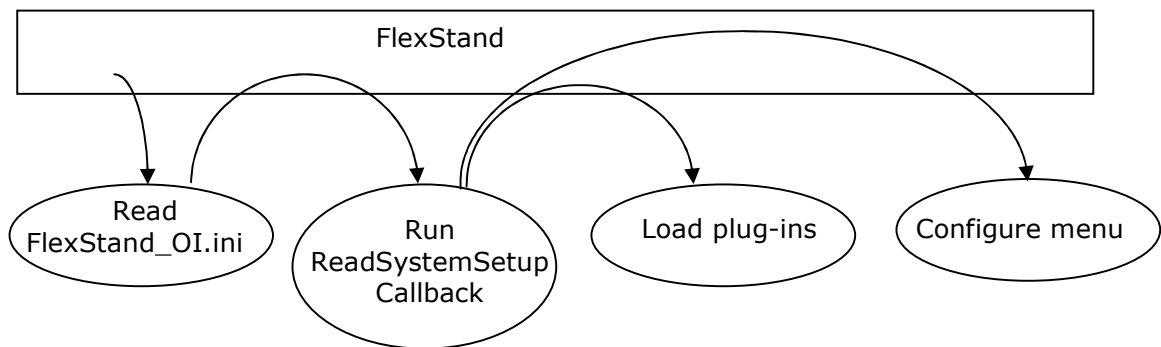


Figure 2: FlexStand operator interface layout

When FlexStand starts it first reads the Flexstand\_OI.ini file. This file is located in the same directory as FlexStand\_OI.exe.



**Figure 3: FlexStand start-up sequence**

As shown in Figure 3 FlexStand read the paths to the callbacks from the .ini file. The most important callback is the ReadSystemSetup callback. This callback is a LabVIEW VI that must contain a number of calls to the API. These calls will configure FlexStand to run as required by the current solution. The FlexStand examples can be used as templates for the ReadSystemSetup.

- CIM\_TS\_API - SetPluginPath (with a list of plug-in paths),
- CIM\_TS\_API - Set TAB Names (with a list of tab names for the main plug-ins),
- CIM\_TS\_API - Set Sys Err Config (with a path to the system error log file),
- CIM\_TS\_API - SetMenubarFileSpecification (with a path to the XML file that defines the menubar).

**Note:** In the FlexStand examples the information listed above is read from an .ini file. This is a solution proposal but not a requirement.

## 4 Getting started

This chapter contains a short description of how to install FlexStand and run the advanced example shipped with the Developer version.

It also contains a short introduction on how to create your own operator interface.

### 4.1 Download

FlexStand can be downloaded from [www.flexstand.eu](http://www.flexstand.eu). FlexStand is available in two versions:

- FlexStand OI Developer
- FlexStand OI Run-time

The following list outlines the difference between the two versions.

Normally you would use a Developer for creating your own operator interface and use a run-time version for the production lines.

Feature	FlexStand OI Run-time	FlexStand OI Developer
LabVIEW palette *		✓
Examples (Simple, Standard and Advanced)	(✓)**	✓
Programmers Reference manual		✓
TestStand Deployment Engine	✓	✓
LabVIEW run-time	✓	✓
Plug-in architecture: Top plug-in, bottom plug-in, Supports up to 10 main plug-ins	✓	✓
Automatic resize of GUI	✓	✓
Callbacks	✓	✓
Tab control including automatic tab change and show/hide tabs	✓	✓
Command line parameters: Supports TestStand standard parameters and Custom defined parameters	✓	✓
Custom menu: Supports TestStand standard menu and custom menu entries	✓	✓
Language localization	✓	✓

\*) Palette includes functions for sequence view, report view, button control, Statusbar, Tab control and other functions.

\*\*) FlexStand run-time installs the simple example.

### 4.2 Upgrade

If you need to upgrade an older version of FlexStand OI to a new version please refer to section 10 for upgrade instructions.



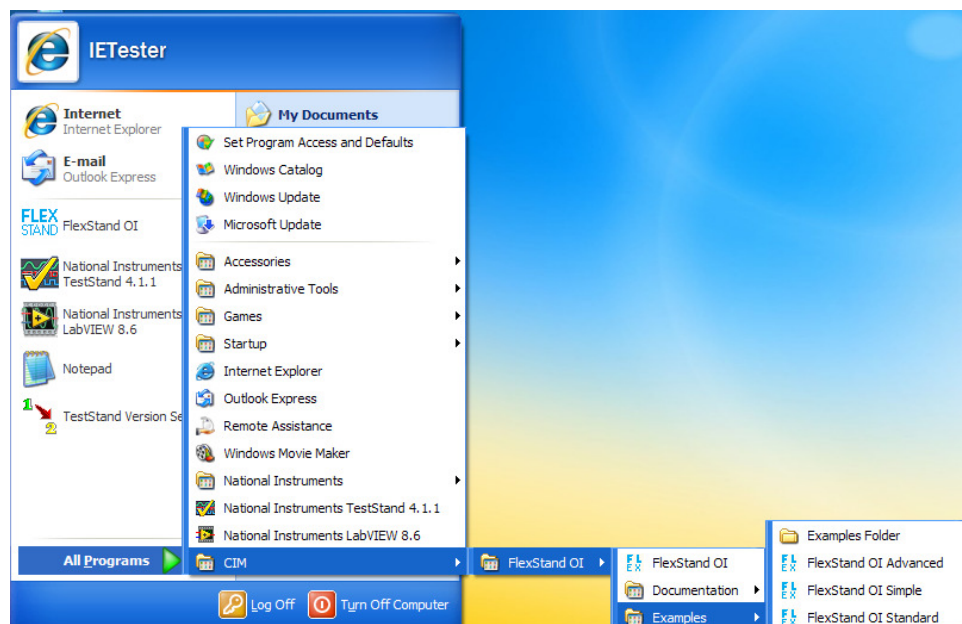
## 4.3 Installation

Before installing the FlexStand operator interface first check the system requirements listed in the Requirements table above. A LabVIEW development system is required for modifying the FlexStand Operator Interface.

To install the FlexStand Operator Interface simply extract the downloaded .zip file and run the setup.exe. Read and accept the license agreement. Normally you should press next in all dialogs during the installation.

## 4.4 Running FlexStand

When the FlexStand Operator Interface has been installed it can be started by pressing the FlexStand icon on the desktop or by selecting FlexStand Operator Interface from the start menu. See Figure 4.



**Figure 4: FlexStand Operator Interface in Start menu**

The FlexStand Operator Interface will now start and show the default operator interface.

The first time FlexStand is started the license dialog is shown. By following the instructions in the license dialog you can purchase a license or activate a license. If you want to run a trial version you can press "Evaluate Flexstand Operator Interface".

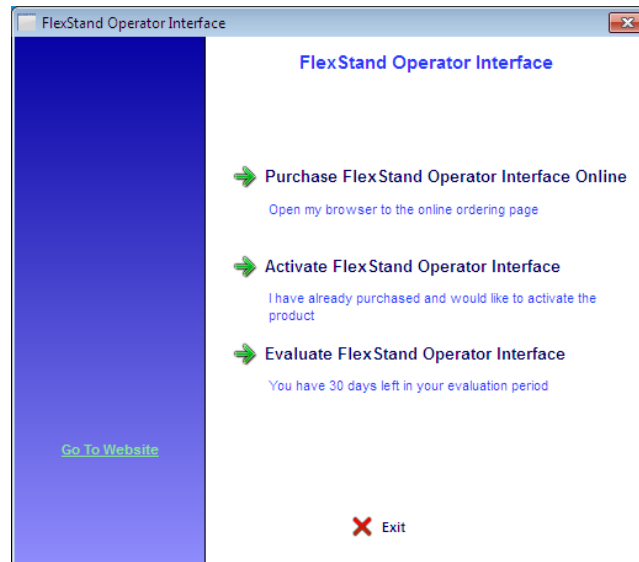


Figure 5: FlexStand license dialog

TestStand will now show its login prompt. Log in as Administrator with an empty password.

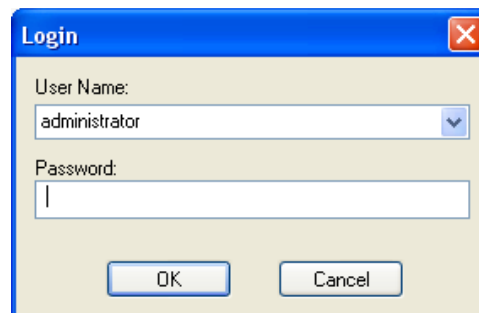
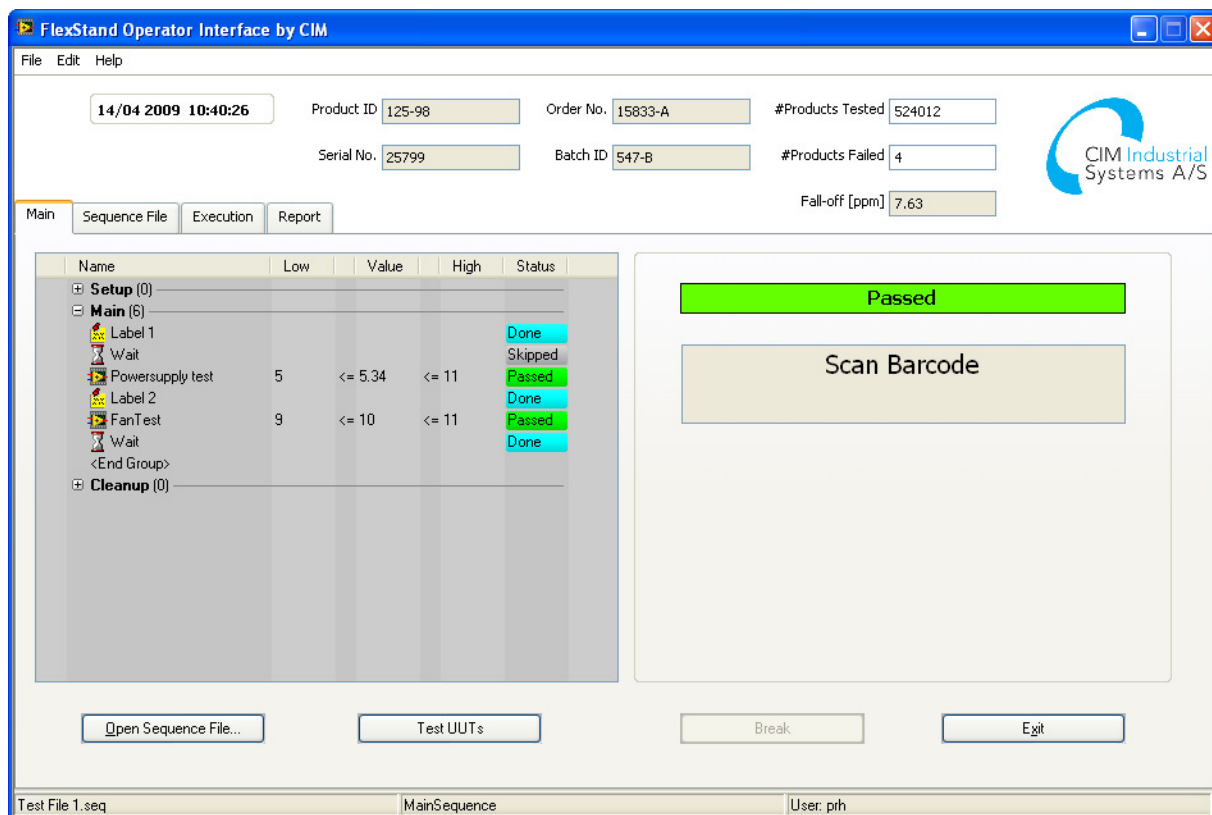


Figure 6: TestStand login prompt



**Figure 7: CIM Operator Interface loaded.**

From the main plug-in a sequence file can be opened by pressing the "Open Sequence File..." button. Open the 'FlexStand OI Demo - Advanced - Computer Motherboard Test Sequence.seq' example sequence normally found in the folder:

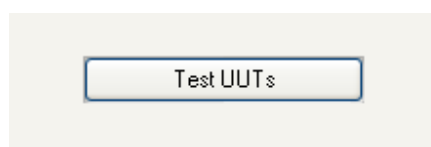
Windows XP:

C:\Documents and Settings\All Users\Documents\National Instruments\TestStand 2010\UserInterfaces\FlexStand OI Examples\Advanced\DemoSequence

Windows 7:

C:\Users\Public\Documents\National Instruments\TestStand 2010\UserInterfaces\FlexStand OI Examples\Advanced\DemoSequence

When the sequence has been loaded the 'Test UUTs' button will be visible as shown in Figure 8.



**Figure 8: Test UUTs button**

Press the Test UUTs button to start the sequence.

When the sequence finishes the operator interface changes to the report tab and displays the final test report as shown in Figure 9.

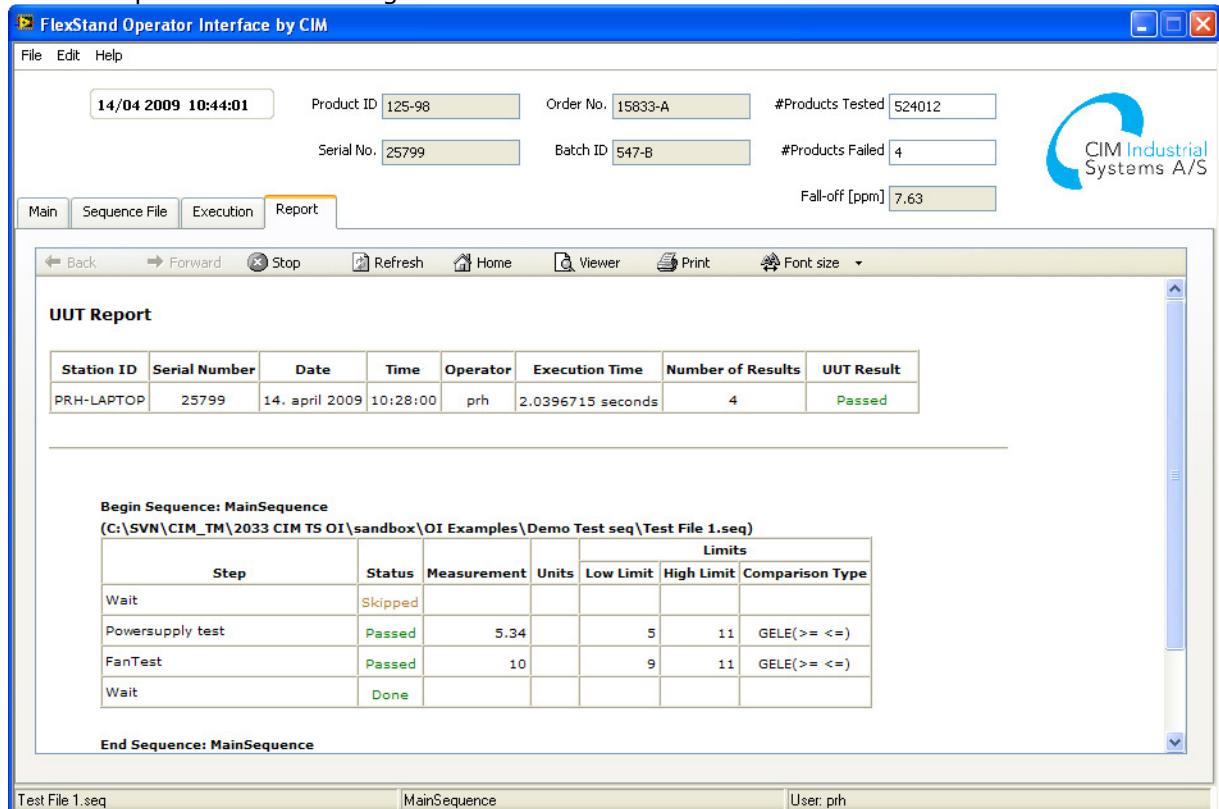


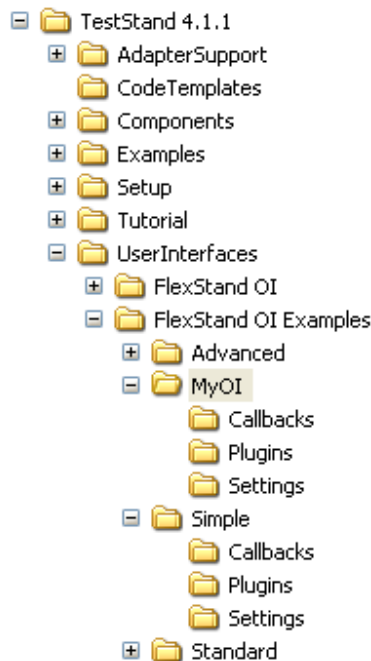
Figure 9: Report view.

## 5 Creating a custom operator interface

If you want a different operator interface than the examples shipped with FlexStand this can easily be made by using the examples as a starting point. The procedure for creating a new operator interface is described in this section. For configuration of the FlexStand OI we recommend using the FlexStand OI Configuration Tool instead of direct modification of the ini files. Refer to section 6 for a description of the configuration tool.

### 5.1 Copy example

Select the example that is closest to the requirements for your custom operator interface. Copy the folder Advanced, Standard or Simple with all subfolders to a new directory. When creating the first operator interface we recommend using the Simple example. Place the new directory at the same level in the tree structure of Documents and settings. Call the new directory a name describing the operator interface you are creating, for example "myOI". Refer to Figure 10.



**Figure 10: New folder for custom operator interface.**

## 5.2 Modify FlexStand\_OI.ini

To run the new operator interface FlexStand must know where to find the new files. FlexStand reads the folder with the callbacks from the FlexStand\_OI.ini file. The FlexStand\_OI.ini file is located in the 'FlexStand OI' folder. Open this file in notepad and correct the path to point to your new folder. The FlexStand\_OI.ini could look like this after modification:

```
[Callbacks]
Init=""
Close=""
SystemError=""
ReadSystemSetup="C:\Documents and Settings\All Users\Documents\National
Instruments\TestStand 2010\UserInterfaces\FlexStand OI
Examples\MyOI\Callbacks\CIM_TS_OI CALLBACK ReadSystemSetup.vi"
ReadCustomSetup=""

[SplashScreen]
Path="C:\Documents and Settings\All Users\Documents\National Instruments\TestStand
2010\UserInterfaces\FlexStand OI Examples\MyOI\Plugins\Advanced_SplashScreenPlugin.vi"
```

## 5.3 Modify Plugins

The new folder 'Plugins' contains the plug-ins used in the example. These plug-ins can now be modified to the new requirements using LabVIEW.

Save the plug-ins as VIs with a front panel of the desired layout and size. FlexStand will automatically adapt the size of the operator interface to the size of the plug-in VIs.

**NOTE:** There must be at least one top plug-in, one bottom plug-in and one main plug-in defined.

## 5.4 Modify plug-in list

The example code uses a SystemSetup.ini file for defining the names of the plug-ins. The method is reused here but can be changed by modifying the ReadSystemSetup callback. Modify the systemSetup.ini file to match the new plug-ins. The following figure shows an example of a SystemSetup.ini file with a top plug-in, two main plug-ins and bottom plug-in.

```
[Plugins]
TopPlugin="Simple_TopPlugin.vi"
MainPlugin1="MyMainPlugin.vi"
MainPlugin2="MyExecutionViewPlugin.vi"
MainPlugin3=""
MainPlugin4=""
MainPlugin5=""
MainPlugin6=""
MainPlugin7=""
MainPlugin8=""
MainPlugin9=""
MainPlugin10=""
BottomPlugin="Simple_BottomPlugin.vi"

[TabNames]
Tab1="TS_Main"
Tab2="Execution view"
Tab3=""
Tab4=""
Tab5=""
Tab6=""
Tab7=""
Tab8=""
Tab9=""
Tab10=""

[SystemErrorLog]
Path="C:\SystemErrorLog.txt"

[MenuConfig]
Path="MenuConfiguration.xml"
```

## 5.5 Run new operator interface

Save all open files and run FlexStand by selecting Start>>All Programs>>CIM>>FlexStandOI>>FlexStand OI. Your new FlexStand operator interface will now start.

## 6 FlexStand OI Configuration Tool

By using the FlexStand OI Configuration Tool you can easily modify the FlexStand OI settings. The configuration tool can be found on the desktop or in the Start menu:  
All Programs->CIM->FlexStand OI->FlexStand OI Config Tool.

When the configuration tool is launched a dialog will ask for the directory of your FlexStand files. This usually points to a custom directory created in the same folder as the FlexStand examples. If you have created a modified copy of one of the shipped examples you should select this new folder in the dialog box.

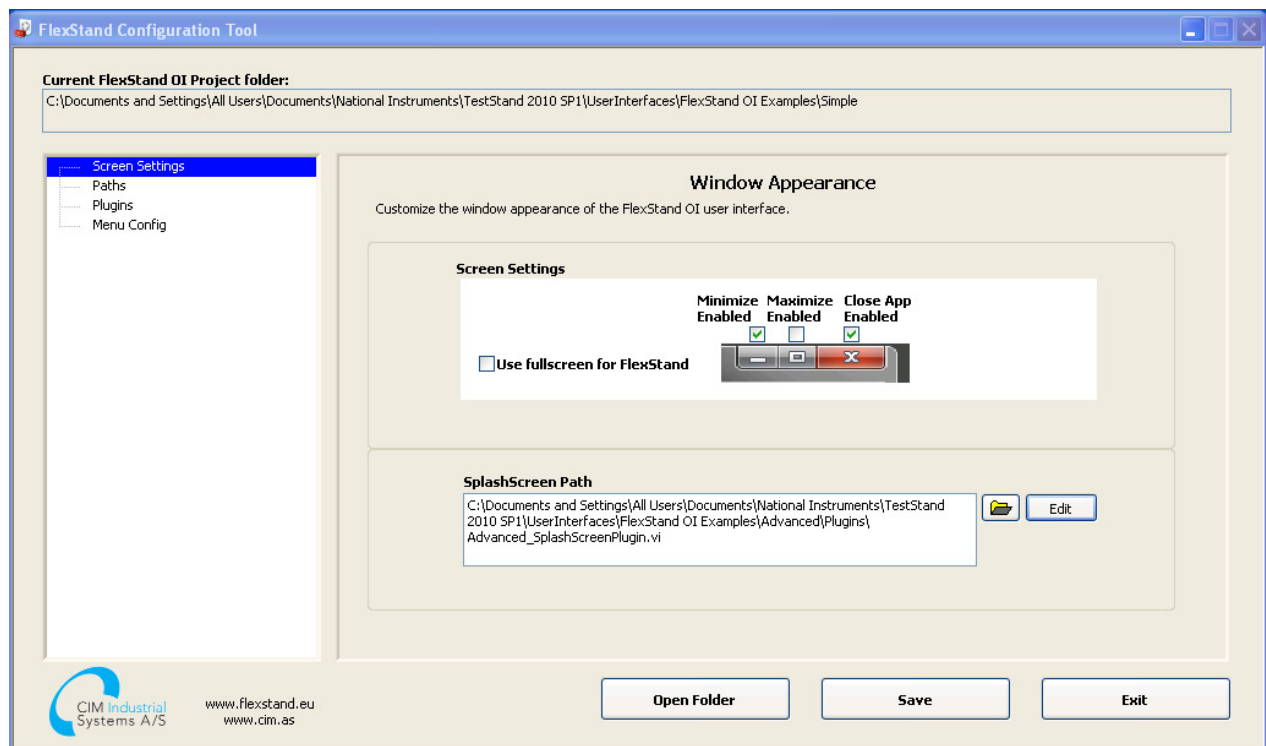


Figure 11: FlexStand Configuration Tool

### 6.1 Screen settings

On the screen shown in the figure above the overall look of FlexStand OI can be configured. It is also possible to change the splash screen shown at startup. The Edit button can be used to edit the vi for the splash screen. This requires LabVIEW development to be installed.

## 6.2 Paths

The Path settings lets you define the various paths used by FlexStand OI.

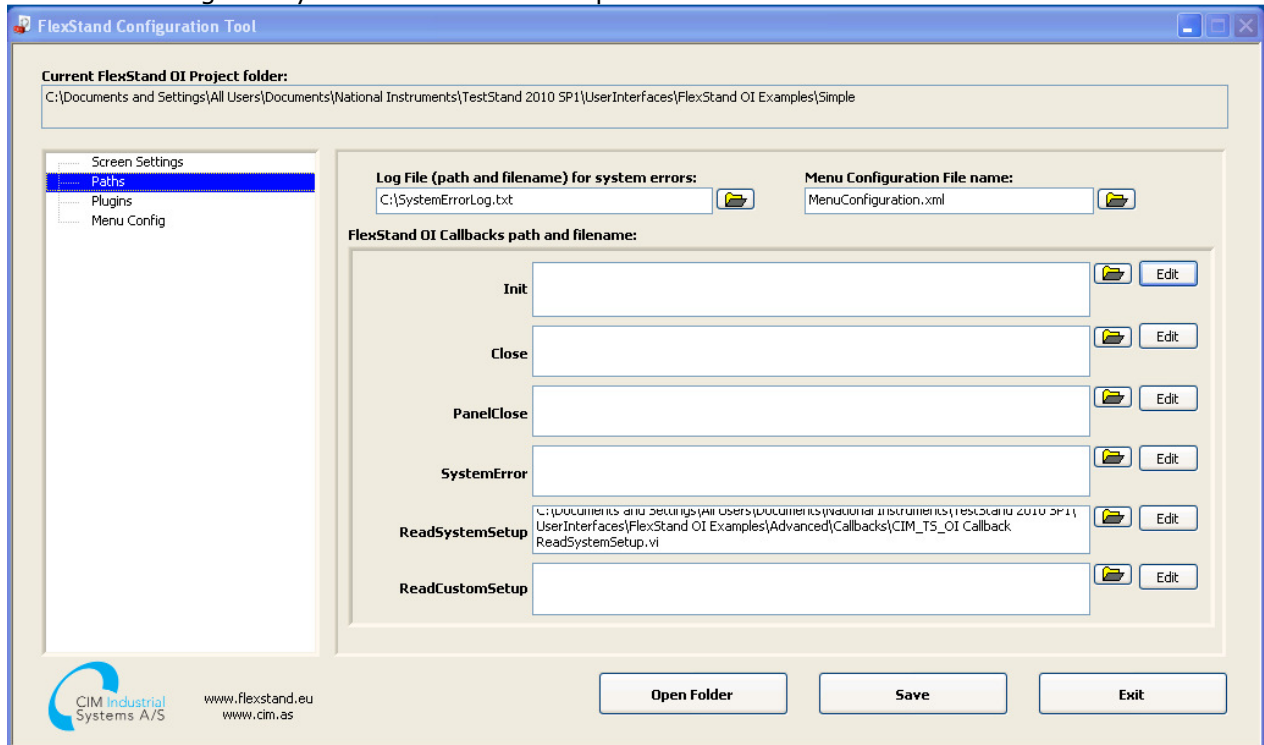


Figure 12: FlexStand Configuration Tool, Paths setting

## 6.3 Plugins

The plugins used in the current FlexStand OI can be configured here.



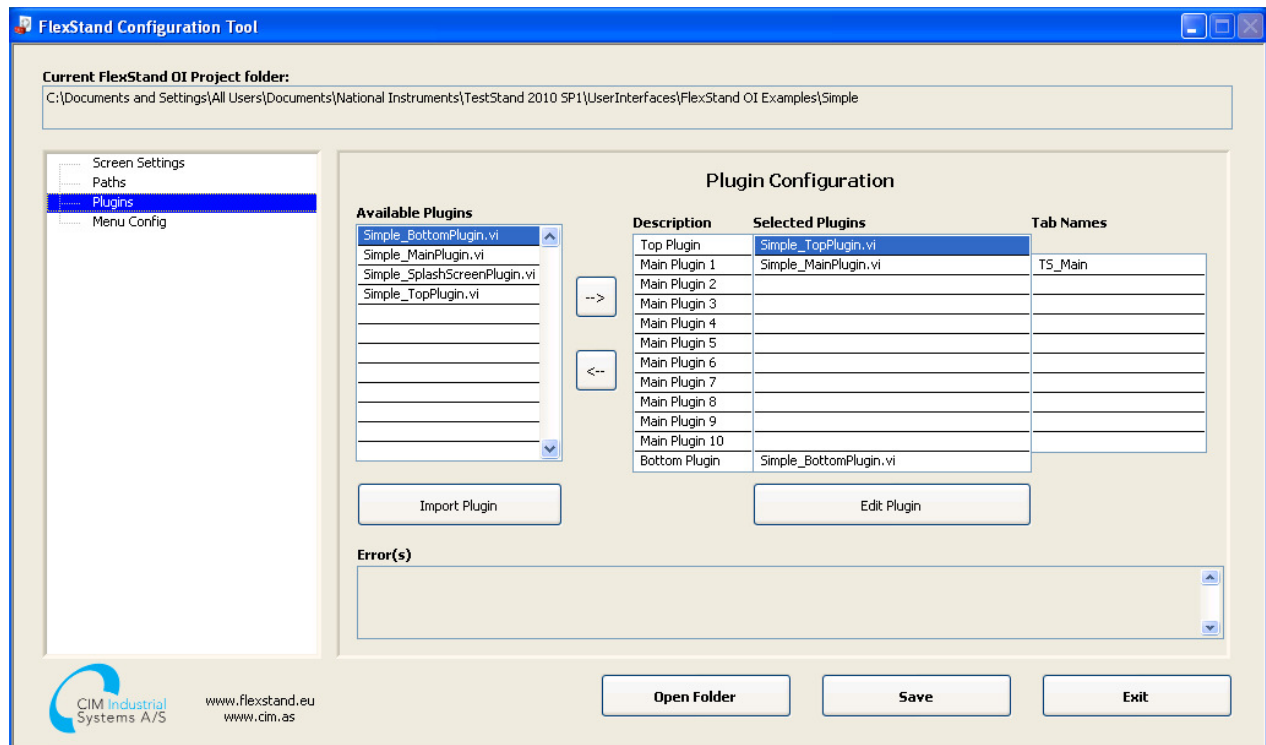


Figure 13: FlexStand Configuration Tool, Plugins

**Selected Plugins** shows the plugins currently used in FlexStand.

**Available Plugins** shows a list of plugins currently available in the plugins directory. Plugins from other projects or examples can be added by using the Import Plugin button.

**Tab names** defines the name shown in the tab. If the name is prefixed with TS\_ it can be translated to local language if the entry is added to the language files. Refer to section 8.6 for a description of the localization feature.

By pressing the Edit Plugin button the selected plugin can be opened in LabVIEW for editing.

## 6.4 Menu config

The pull down menu in FlexStand can be configured to contain both TestStand build in entries and custom entries. The menu config defines the contents of the menus and the tags to be used in the plugins (for custom entries).

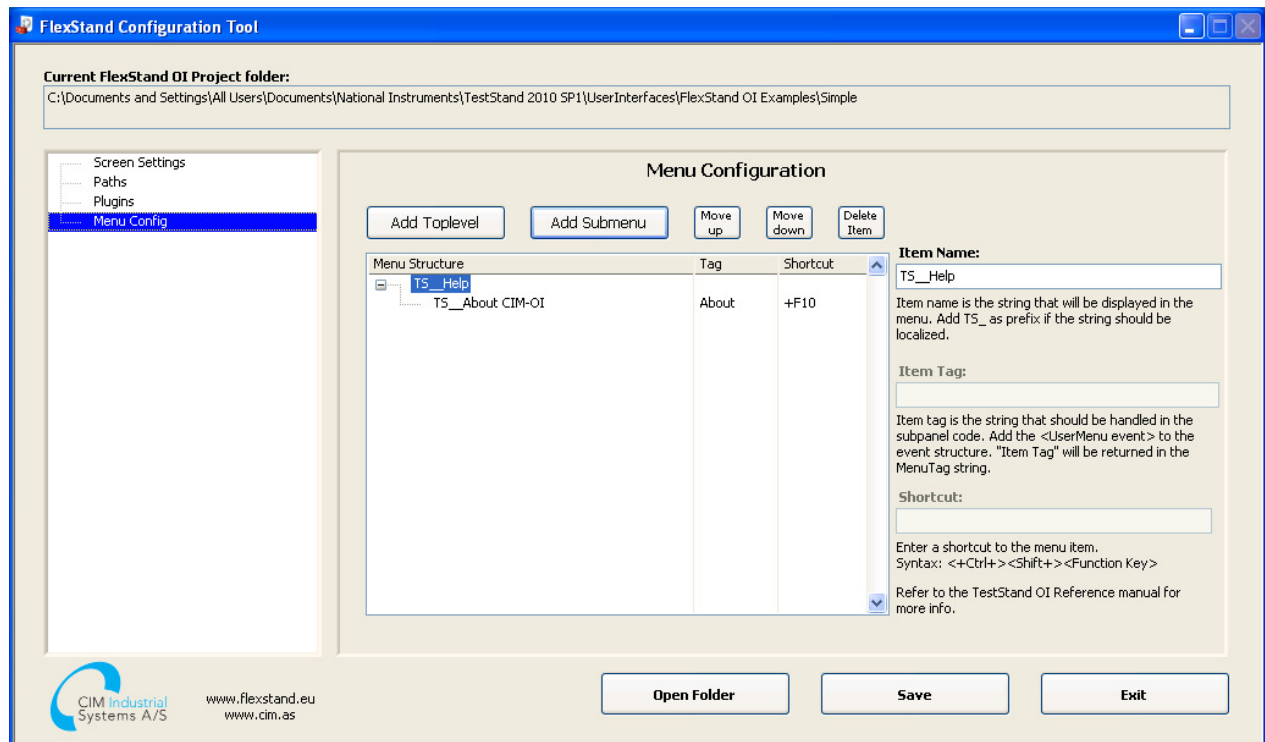


Figure 14: FlexStand Configuration Tool, Menu config

**Item Name** is the name shown in the menu. If the name is prefixed with TS\_ it can be translated to local language if the entry is added to the language files. Refer to section 8.6 for a description of the localization feature. The build-in menus in TestStand can be used as Item name. A list of available build-in TestStand items can be found in the TestStand help by searching for "CommandKinds". Figure 15 shows an example of how to use the default file menu from TestStand in the FlexStand OI menu.

**Item Tag** is the Menutag (string) that is returned with the UserMenu event when the user selects the menu entry. This is typically included in the event handler of one of the main plug-ins. If a TestStand built-in menu item is used the FlexStand kernel will execute the menu item and a user event is not sent to the event handler. In this case the Item Tag must be empty. Refer to Figure 15.

**Shortcut.** A keyboard shortcut can be defined for the entry. The shortcut is a text string of the format [+Ctrl][+Shift][+]Shortcutkey.

Menu Structure	Tag	Shortcut
TS__File		
CommandKind_DefaultFileMenu_Set		
TS__Edit		
CommandKind_DefaultEditMenu_Set		
TS__Configure		
TS__Language	Language	
TS__Help		
TS__About CIM-OI	About	Shift+F10

**Item Name:**  
  
Item name is the string that will be displayed in the menu. Add TS\_ as prefix if the string should be localized.

**Item Tag:**  
  
Item tag is the string that should be handled in the subpanel code. Add the <UserMenu event> to the event structure. "Item Tag" will be returned in the MenuTag string.

**Shortcut:**  
  
Enter a shortcut to the menu item.  
Syntax: <+Ctrl+> <Shift+> <Function Key>  
  
Refer to the TestStand OI Reference manual for more info.

Figure 15: Example of using the TestStand default File menu.

## 7 Templates

The FlexStand OI SDK comes with a number of fully functional operator interfaces. These operator interfaces can be used as is or serve as a template for building a customized operator interface.

The files for the example operator interfaces are stored in the TestStand directory which is normally found in the folder:

Windows XP:

C:\Documents and Settings\All Users\Documents\National Instruments\TestStand  
2010\UserInterfaces\FlexStand OI Examples

Windows 7:

C:\Users\Public\Documents\National Instruments\TestStand 2010  
SP1\UserInterfaces\FlexStand OI Examples

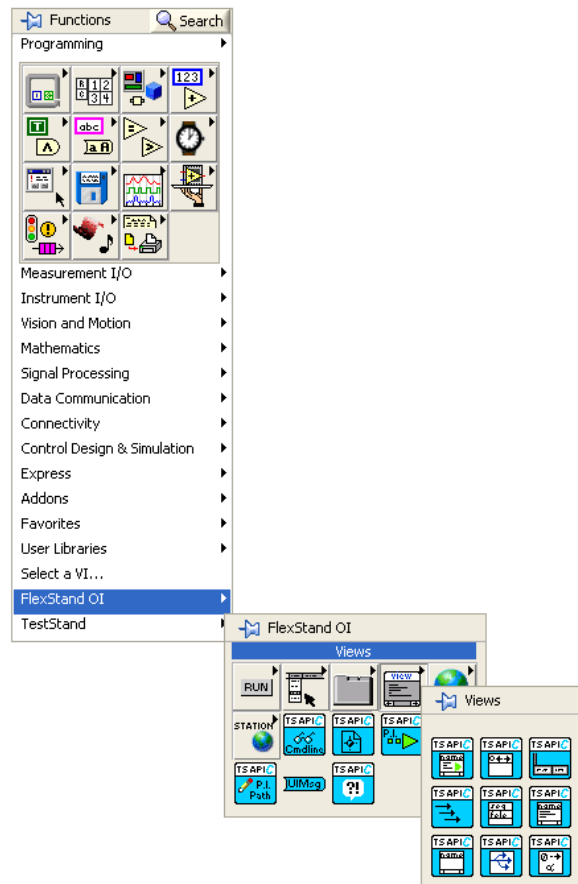
The components of the FlexStand OI are described in details in the following chapters.

## 8 FlexStand Reference

The following sections contain detailed information about the components in FlexStand.

### 8.1 LabVIEW palette

FlexStand OI SDK will install a FlexStand palette in LabVIEW. This palette contains all the API functions that are needed for creating callbacks and plug-ins.



**Figure 16: FlexStand palette in LabVIEW**

## 8.2 Callbacks

The Operator Interface can make calls to specific callback functions during execution. The following table shows a list of the callbacks and the sequence in which they are called.

Callback	Called at	Function
Init	Start of Operator Interface. Called before the TS kernel is loaded.	Default empty. Can be used for logging of program start or to start programs that needs to run in parallel with the Operator Interface.
ReadSystemSetup	Start of Operator Interface. Called after the TS kernel is loaded.	Sets the system parameters for: Plug-in Paths, Tab names, Menu specification file, System error handling.
ReadCustomSetup	Start of Operator Interface. Called after the TS kernel is loaded and immediately after the ReadSystemSetup callback.	Default empty. Can be used to read custom settings that must be available to the plug-ins for later use. See example below.
PanelClose	Called when the operator presses the Windows Close function. The callback is called before the Teststand engine is shut down.	Default empty. Use the callback for closing running executions and clean-up of the application before exit. This callback is only used if the CloseAppEnabled is set to True in the FlexStand_OI.ini file in the [Settings] section.
Close	Shut down of the Operator Interface. The callback is called after the Teststand engine has been shut down and immediately before FlexStand closes.	Default empty. Contains example code of how to shut down the computer. Can for example be used for cleanup of data or to stop programs running in parallel to the Operator Interface.
System error	System error	Default empty. Can be used to log system error in a customer specific system or to modify the system error or even delete the system error for known cases. If the system error is cleared in the callback the system error handling built into the Operator Interface will not execute.

The operator interface is delivered with a set of template callbacks that can be used as a starting point for creating a customized callback.

The location of the callbacks must be listed in the FlexStand\_OI ini-file. This file is located in the same directory as the FlexStand\_OI.exe.  
The ini-file contains a section called [Callbacks]. This section lists the locations of the callbacks.

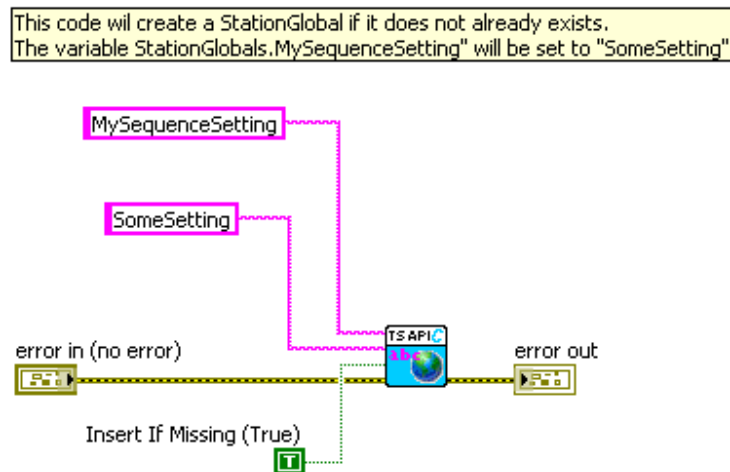
```
[Callbacks]
Init=" "
Close=""
PanelClose=""
SystemError=" "
ReadSystemSetup=" C:\Users\All Users\Documents\National Instruments\TestStand 2010\UserInterfaces\FlexStand OI
Examples\Advanced\Callbacks\CIM_TS_OI CALLBACK ReadSystemSetup.vi"
ReadCustomSetup=" "
```

**Figure 17: Typical settings for callbacks**

Note that callbacks with empty paths will not be called.

### 8.2.1 ReadCustomSetup callback

The ReadCustomSetup callback can be used to execute code at the beginning of the FlexStand execution. The ReadCustomSetup callback is called after the TS kernel has been loaded but before the login. An example of functionality could be to set some settings that must be available during the execution of the current FlexStand session.



**Figure 18: Example of ReadCustomSetup callback.**

## 8.3 FlexStand OI .ini file

The FlexStand OI ini-file contains various basic settings for the operator interface. The .ini file is located in the folder:

C:\Documents and Settings\All Users\Documents\National Instruments\TestStand  
2010\UserInterfaces\FlexStand OI\FlexStand\_OI - Main.ini

The .ini file consists of the following sections:

### 8.3.1 [FlexStand\_OI]

Contains information used by LabVIEW. This section should normally not be modified.

### 8.3.2 [Callbacks]

Contains path and filename to the callbacks used. Refer to section 8.2.

### 8.3.3 [SplashScreen]

Contains path and filename to the splash screen shown during startup of FlexStand. The default splash screens used is located in the examples.

### 8.3.4 [Settings]

Settings for the operator interface.

**Fullscreen:** If set to True the FlexStand OI will be shown in full screen mode. This will avoid access to the desktop and will not allow minimize, resize, close or move of the FlexStand OI window.

**MinimizeEnabled:** If set to True (default) the FlexStand OI window can be minimized. This setting is ignored if Fullscreen is set to True.

**MaximizeEnabled:** If set to True (default) the FlexStand OI window can be maximized (resized). This setting is ignored if Fullscreen is set to True.

**CloseAppEnabled:** If set to True (default) the FlexStand OI window can be closed by pressing Close application. This setting is ignored if Fullscreen is set to True.

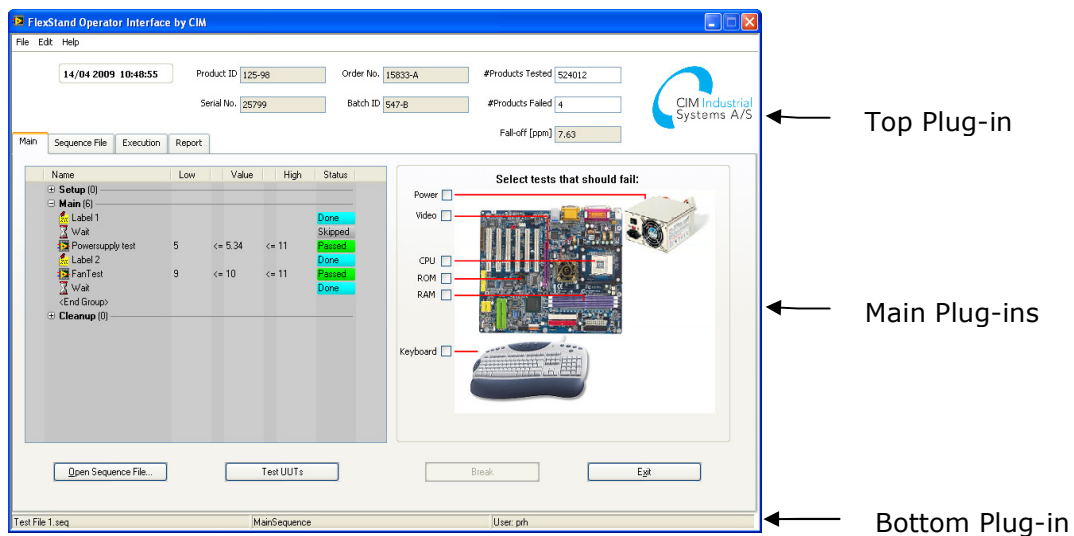


## 8.4 Plug-ins

### 8.4.1 Plug-in overview

The main user interface is organized in a number of plug-ins. The plug-ins is LabVIEW VIs created to meet the needs for the actual operator interface. The operator interface automatically loads the plug-in at the appropriate locations and resizes the window to fit the size of the plug-in.

Figure 19 shows the layout of the plug-in. The operator interface supports one top panel plug-in, ten main panel plug-ins and one bottom panel plug-in.



**Figure 19: Plug-in layout.**

The ten main panel plug-ins will be located on tabs, one plug-in on each tab.

### 8.4.2 Plug-in contents

The plug-ins are LabVIEW VIs that must contain an event handler and other predefined calls to work properly. The event handler is used to receive events from the plug-in, from the FlexStand engine and from the TestStand engine. The plug-in must also send a message to the Operator Interface in order to tell the Operator Interface when the plug-in is running and ready to receive events.

#### 8.4.2.1 Event handler

Figure 20 shows a typical basic layout of the code in a plug-in. The Get Event function returns a reference to the dynamic events generated by the Operator Interface. The reference must be connected to the dynamic event terminal on the event handler structure.

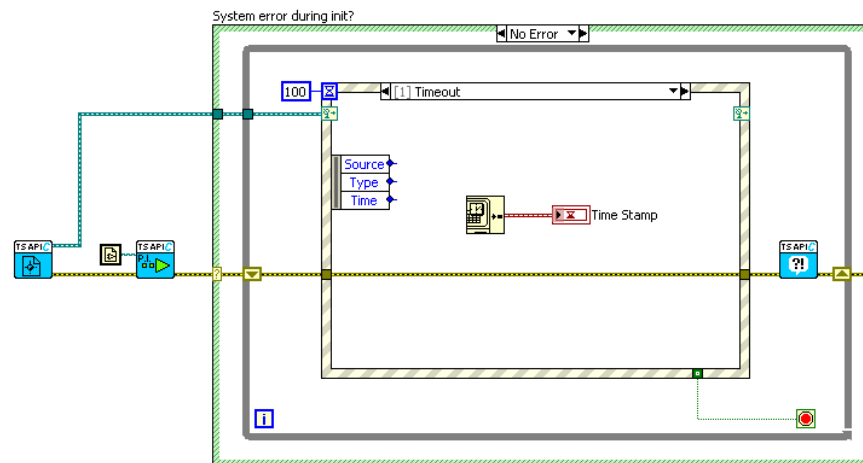


Figure 20: Plug-in code.

The function 'Plug-in Started' sends a message to the Operator Interface that indicates that the plug-in has initialized and is ready to receive events.

In the above example the event handler contains a Timeout event case that updates a watch. As shown in Figure 21 the event handler also contains a Quit application event. This event is triggered when the Operator Interface is shutting down. The Quit application event must stop the execution of the plug-in. The Operator Interface waits for the plug-ins to stop before it finishes. The call to System error is a general API function to handle system errors.

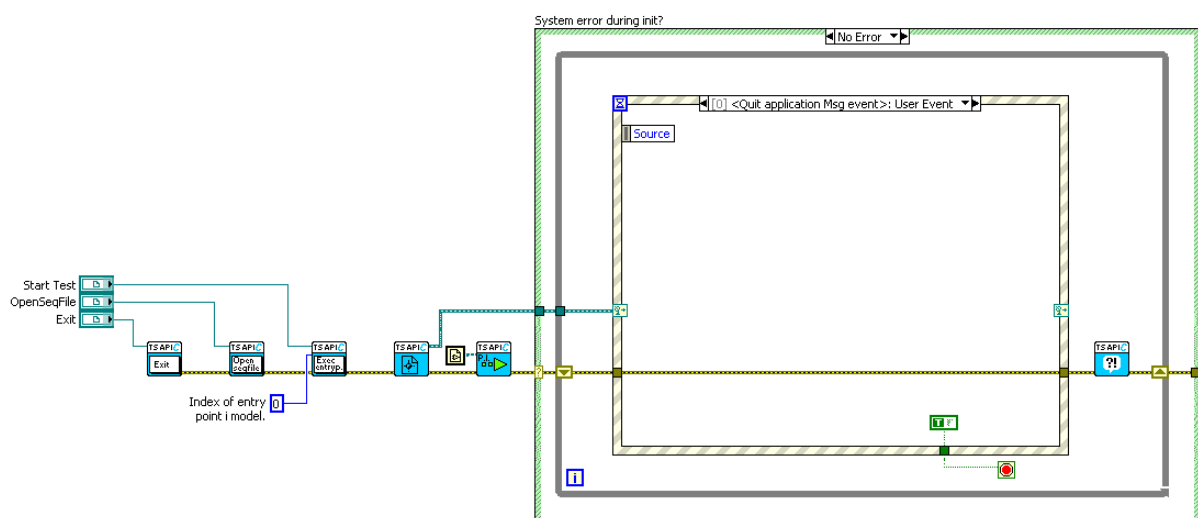


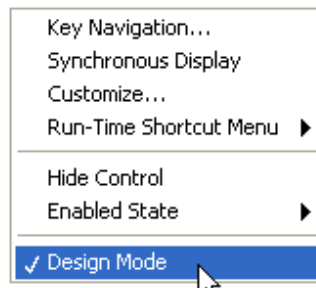
Figure 21: Quit application event.

#### 8.4.2.2 TestStand buttons

A plug-in will typically contain TestStand elements like buttons and views. Using the FlexStand API these elements are connected to the TestStand kernel. This connection will ensure that the content of the button or view is continuously updated by the TestStand kernel.

### 8.4.2.3 Views

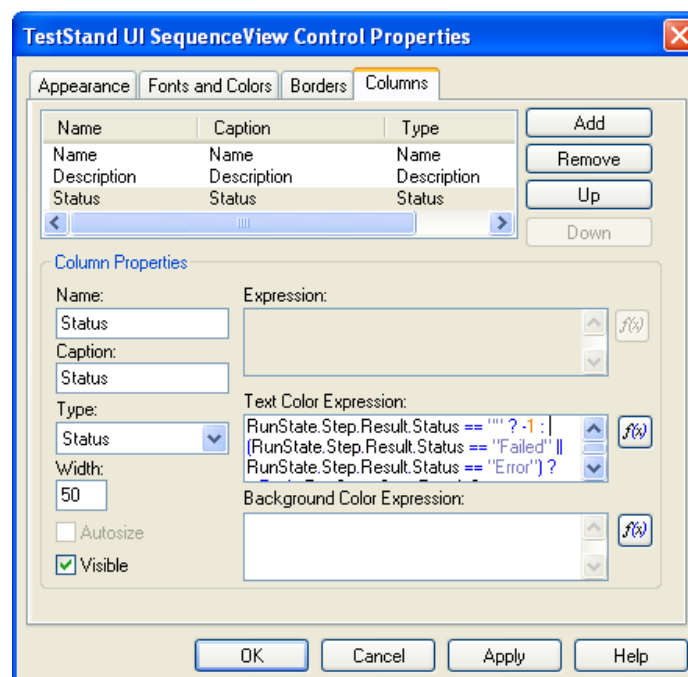
FlexStand OI supports a number of views that can be inserted in the plug-ins. These views can be configured using a dialog box. To open the dialog for configuration right click on the view in edit mode and select Advanced >> Design mode:



Right click again on the view and select for example SequenceView>>Properties. In the dialog box shown the contents of the view can be fully configured.

Examples of configurations:

To create an Execution view that shows the status of the step add the status column in the SequenceView. If you want the status to be colored green and red for Pass and Fail insert the following expression in the dialog.



**Figure 22: Expression for colored Pass/Fail status**

The expression used is:

```
RunState.Step.Result.Status == "" ? -1 : (RunState.Step.Result.Status == "Failed" ||
RunState.Step.Result.Status == "Error") ? tsRed : RunState.Step.Result.Status == "Passed" ?
tsGreen : RunState.Step.Result.Status == "Skipped" ? tsLightGray :
(RunState.Step.Result.Status == "Running"
```

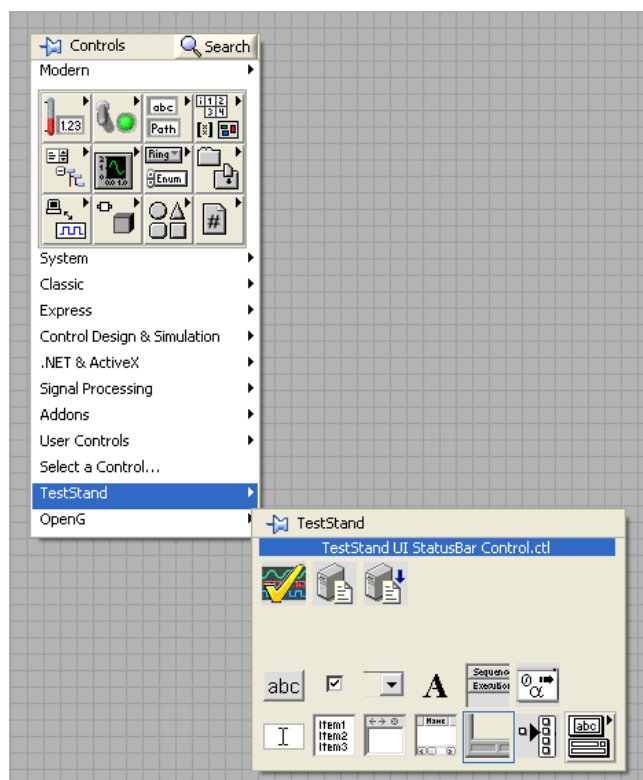
```
|| RunState.Step.Result.Status == "Looping") ? tsMagenta : RunState.Step.Result.Status ==  
"Terminated" ? tsBlue : tsCyan
```

The expression can be copied from the text above or from the example shipped with FlexStand OI.

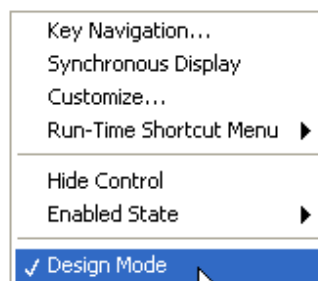
#### 8.4.2.4 Status bar

The standard TestStand status bar can be used on the front panels of the plug-ins. In the examples shipped with FlexStand the status bar is located in the bottom plug-in. The content of the status bar is configured in edit mode by using the following procedure:

Add the TestStand UI StatusBar to the front panel of the vi.

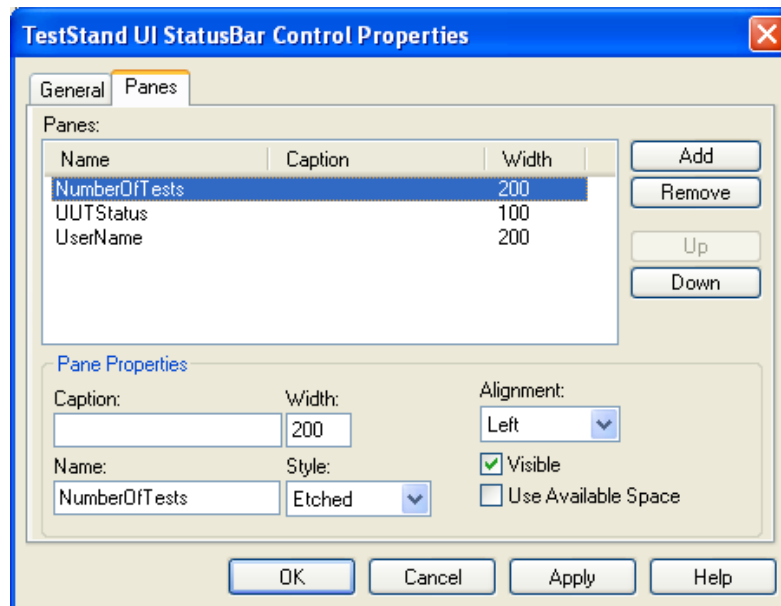


Right click the StatusBar and select Advanced. Make sure Design Mode is checked:



Right click on the StatusBar and open the editor by selecting Statusbar>>Properties. The properties editor now opens. Select the Panes tab as shown in the following figure.

NOTE: Remember to uncheck Design Mode before executing the plug-in otherwise the StatusBar will not be shown.



In the example above the StatusBar contains three elements: Number of tests in the sequence, UUT status and the user name. The name used for the entry tells the FlexStand engine which elements to insert in the StatusBar. The names listed in following table can be used. The names must be spelled exactly as shown for the FlexStand engine to recognize the entry. Some items will only be updated if a UIMessage Event is send from the model or test sequence. For those items where the UI Message is needed the UIMsg event code to use is shown in the following list.

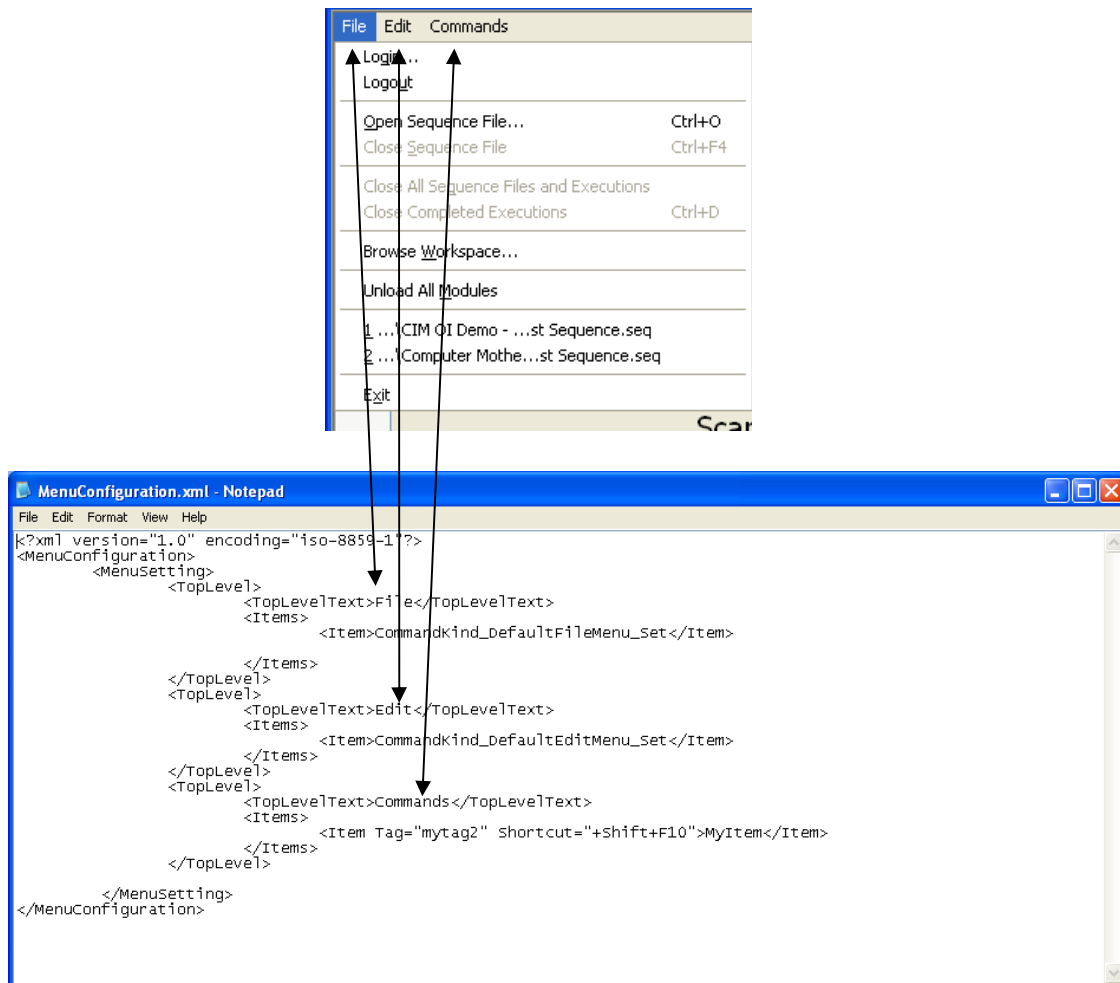
- **BatchSerialNumber:** Displays the batch serial number for the batch that contains the current execution
- **BatchState:** Displays a description of the execution state of the batch that contains the current execution. For example, this caption might display Initializing, Testing, Waiting, or Completed [Passed].
- **BatchStatus:** Displays the batch result status for the batch that contains the current execution.
- **CurrentCallStackEntry:** Displays a name that identifies the current call stack item in the foreground thread in the current execution.
- **CurrentExecution:** Displays a name that identifies the current execution.
- **CurrentProcessModelFile:** Displays the path name of the process model file for the currently executing or currently selected sequence file.
- **CurrentSequence:** Displays the name of the currently executing or currently selected sequence.
- **CurrentSequenceComment:** Displays the comment for the currently executing or currently selected sequence.
- **CurrentSequenceFile:** Displays the path name of the currently executing or currently selected sequence file.
- **CurrentSequenceFileComment:** Displays the comment for the currently executing or currently selected sequence file.
- **CurrentStep:** Displays the name of the current step in the current execution.
- **CurrentStepComment:** Displays the comment for the current step in the current execution.

- **CurrentStepGroup:** Displays the name of the currently executing or currently selected step group.
- **CurrentStepIndex\_ZeroBased:** Displays the zero-based index of the current step in the current execution.
- **CurrentTestIndex\_OneBased:** Displays the one-based index of the current step in the current execution.
- **CurrentThread:** Displays a name that identifies the foreground thread in the current execution.
- **Date:** Displays the current date.
- **ModelState:** Displays a description of the execution state of the current execution. For example, this caption might display Initializing, Testing, Waiting, or Completed [Passed].
- **NotASource:** Guaranteed to never be a valid caption source specifier.
- **NumberOfSteps:** Displays the number of steps in the currently executing or currently selected step group.
- **NumberOfTests:** Displays the number of steps in the currently executing or currently selected step group. The description uses the word *test* in place of the word *step*.
- **ProgressPercent:** Displays the progress percentage information for the current execution. This caption indicates the progress of operations for which the execution chooses to report the amount of progress. It does not necessarily reflect the progress of the execution as a whole. The progress percent is sent by a process model through the `UIMsg_ProgressPercent` `UIMessageCode`.
- **ProgressText:** Displays the progress message for the current execution. The progress text is sent by a process model through the `UIMsg_ProgressText` `UIMessageCode`.
- **ReportLocation:** Displays the location of the report for the current execution. The display value for a report is specified by the `Report.Location` property.
- **TestSocketIndex:** Displays the zero-based index of the test socket for the current execution. Displays nothing if the execution is not participating in a multi-socket test process. The text socket index is sent by a process model through the `UIMsg_ModelState_BeginTesting` and `UIMsg_ModelState_Waiting` `UIMessageCodes`.
- **UserName:** Displays the name of the current user.
- **UUTStatus:** Displays the result status of the UUT for the current execution. The UUT status is sent by a process model through the `UIMsg_ModelState_TestingComplete` `UIMessageCode`.

## 8.5 Menubar

The menubar in the FlexStand Operator Interface can be customized to contain both TestStand and user defined entries.

The specification of the menubar is done using an XML file located in the settings folder. The contents of the XML file can be modified in a simple text editor like Notepad. Figure 23 shows the connection between the menubar and the 'Toplevel' elements of the XML file.



**Figure 23: Menubar XML file.**

Each <Toplevel> element must contain an entry for the menu text <TopLevelText> and an <items> section. In the <Items> section the elements of the toplevel menu are defined. The tag <Item> defines each element in the menu. If the Item is set to a built-in TestStand element like for example 'CommandKind\_DefaultFileMenu\_Set' this element will automatically be added to the menu. A user defined item can be added also by using the <Item> tag but the tag must also contain two attributes for the menu entry: Tag-name and shortcut. Shortcut is optional. The attributes must be entered as shown in the above example:

```
<Item Tag="mytag2" Shortcut="+Shift+F10">MyItem</Item>
```

“mytag2” is the tag text that will be returned to the event handlers in the plug-ins when the menu entry is activated. Menu entries are returned using the event ‘UserMenu event’.

“Shortcut” is the optional shortcut key to use for the entry. The shortcut must have the format:

[+Ctrl][+Shift][+]Shortcutkey.

‘+Ctrl’ and ‘+Shift’ must be added if the shortcut needs to use Shift, Ctrl or both Shift and Ctrl as modifiers. If both Ctrl and Shift must be used the modifiers must be written in the sequence ‘+Ctrl+Shift’.

The plus in front of the Shortcut key is optional but is recommended to ease reading of the shortcut.



## 8.6 Language translation

Strings used in the FlexStand Operator Interface can be translated to a local language. The strings used in the FlexStand Operator Interface are defined in the file:

```
C:\Documents and Settings\All Users\Documents\National Instruments\TestStand
2010\Components\Language\English\FlexStand OI CustomStrings.ini
```

The file contains two main sections: [FlexStand-OI-Menu] and [FlexStand-OI-Main]. The first section contains the strings for the user defined entries in the menu. The second section contains strings for the tab names and for strings used in the plug-ins. See section 0 for a description of the resource file format.

```
[FlexStand-OI-Menu]
;; Put entries for the menu here.
About FlexStand-OI="About FlexStand OI"
Help="Help"
File="File"

[FlexStand-OI-Main]
;; Put entries for the plug-ins here.
Main="Main"
Execution="Execution"
Report="Report"
F6 ButtonText="Serial no queue [F6]"
F7 ButtonText="N-loop [F7]"
Serialnumber="Serial number"
```

### 8.6.1 Menu translation

To translate the menu entries the names must have a prefix of TS\_\_ (NOTE double underscore). TestStand uses TS\_ (single underscore) as prefix for strings to be looked up but for menu items an underscore denotes a shortcut to the following letter. Therefore the lookup string must contain two underscores for menu items.

In the above example the menu File (... \FlexStand\_OI \Settings \MenuConfiguration.xml) should have the text TS\_\_File to be looked up correct. For this example the menu file will look like the following:

```
<?xml version="1.0" encoding="iso-8859-1"?>
<MenuConfiguration>
  <MenuSetting>
    <TopLevel>
      <TopLevelText>TS__File</TopLevelText>
      <Items>
        ...
      </Items>
    </TopLevel>
  </MenuSetting>
</MenuConfiguration>
```

### 8.6.2 Tab names translation

The texts in the tabs on the FlexStand Operator Interface can be translated by entering the strings in the [FlexStand-OI-Main] section of the file. The tab names used when calling the API function "Set Tab Names" should start with TS\_.

To translate the Main tab in the example above the name should be set to TS\_Main when calling the API function "Set Tab Names".

### 8.6.3 Plug-in string translation

Strings used in the plug-ins can be translated by using the following rules:

- LabVIEW control and indicator captions will be translated if the label is set to a name with the format TS\_<label>. <label> must be entered in the resource file mentioned above in the [FlexStand-OI-Main] section. The caption must be visible.
- For LabVIEW Boolean buttons and indicators the Boolean text will be translated if the Boolean text starts with TS\_.
- LabVIEW free labels will be translated if the contents contains TS\_. Note that the VI should be saved with the TS\_<text> as free label. Use "Set current value as default" to make sure the VI is not saved with the translated text.
- TestStand controls and indicators are translated by using the default TestStand resource string method. See section 8.6.4.

### 8.6.4 Translation during execution

During execution of FlexStand strings can be translated by calling the API function "CIM\_TS\_API - Localize String.vi". This function can be used to convert user messages and other text during execution of FlexStand. Strings to be translated by using the API function must start with "TS\_". For plug-ins the text must be added to the section [CIM-OI-Main] in the language files.

### 8.6.5 TestStand resource string method

TestStand uses a resource string method to obtain the string messages to display in the FlexStand Operator Interface, sequence editor and user interface windows and dialog boxes. The method uses a string category and a tag name and searches for the string resource in all string resource files in the following predefined order of directories:

1. <TestStand Public>\Components\Language\<current language>
2. <TestStand Public>\Components\Language\English
3. <TestStand Public>\Components\Language
4. <TestStand>\Components\Language\<current language>
5. <TestStand>\Components\Language\English
6. <TestStand>\Components\Language

Select **Configure»Station Options** in the TestStand editor to change the current language setting.

To customize a string resource file for a supported language or to create a resource file for a new language, copy an existing language file from the

<TestStand>\Components\Language\<language> directory, place the file in the <TestStand Public>\Components\Language\<language> directory, and modify the file. To create a resource string file that applies to all languages, place the resource file in the base <TestStand Public>\Components\Language directory.

**Note** The TestStand Engine loads resource files when you start the TestStand engine. If you make changes to the resource files, you must restart FlexStand for the changes to take effect.

#### String Resource File Format

String resource files must use the .ini file extension and use the following format:

```
[category1]
tag1 = "string value 1"
tag2 = "string value 2"
[category2]
tag1 = "string value 1"
tag2 = "string value 2"
```

When you create new entries in a string resource file or create a string resource file for custom components, use unique category names to avoid conflicts with the default names TestStand uses. For example, begin new category names with a unique ID, such as a company prefix. You can create an unlimited number of categories and tag names. You can create strings of unlimited size, but you must break a string with more than 512 characters into multiple lines. Each line includes a `lineNNNN` tag suffix, where `NNNN` is the line number with zero padding, as shown in the following example:

```
[category1]
tag1 line0001 = "This is the first sentence of a long "
tag1 line0002 = "paragraph. This is the second sentence."
```

You can use the escape codes in Table 1 to insert unprintable characters.

Table 1: Resource String File Escape Codes

Escape Code	Description
<code>\n</code>	Embedded linefeed character.
<code>\r</code>	Carriage Return character.
<code>\t</code>	Tab character.
<code>\xnn</code>	Hexadecimal value that represents the character. For example, <code>\x1B</code> represents the ASCII ESC character.
<code>\\</code>	Backslash character.
<code>\"</code>	Double quotation mark.

## 9 Deployment of FlexStand OI

When you need to deploy your FlexStand Operator Interface on a production line you can choose to install a FlexStand Developer or Run-time license. We recommend you use a run-time license for the production line. The license for the Run-Time version of FlexStand OI is cheaper but does not allow you to develop FlexStand OI plug-ins. All software developed on the FlexStand Developer will run on the run-time option of FlexStand without limitations.

Summary of license requirements:

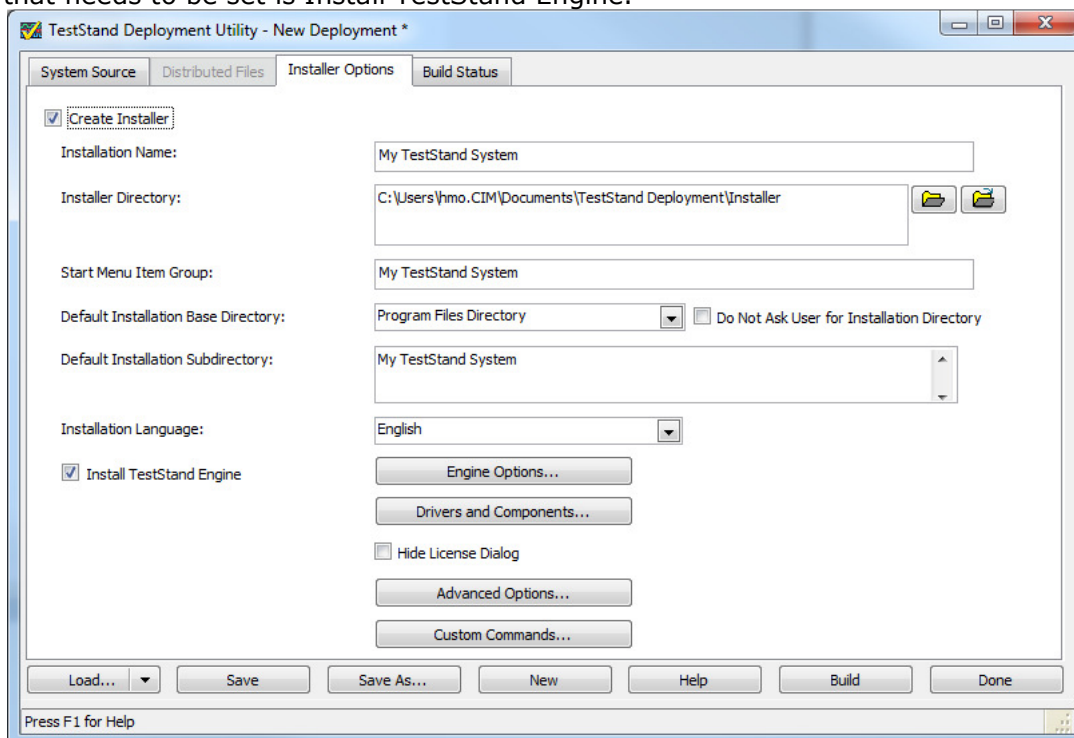
- You will need one license for each machine running FlexStand OI. This can be FlexStand OI Developer or FlexStand OI run-time.
- It is a requirement that you buy at least one Developer License.

You can buy licenses and get an overview of your current licenses on [www.flexstand.eu](http://www.flexstand.eu).

### 9.1 TestStand Deployment

In order to run TestStand on a Run-Time PC a TestStand deployment needs to be installed. The deployment installer is created from the TestStand Editor.

The Deployment tool can be found in the Tools menu -> Deploy TestStand Engine.. For a standard FlexStand OI installation an “empty” deployment is needed. The only checkmark that needs to be set is Install TestStand Engine.



You may include other drivers and components if needed by the application.

Build the deployment.

Note: During the build process you may need the TestStand install disks.

Run the deployment installer created above on the Run-Time PC.

## 9.2 TestStand Settings

To copy the TestStand settings (for example Station Globals, User logins and Report Options) copy the relevant files from the <TestStand>\cfg to the Run-Time PC in the same folder.

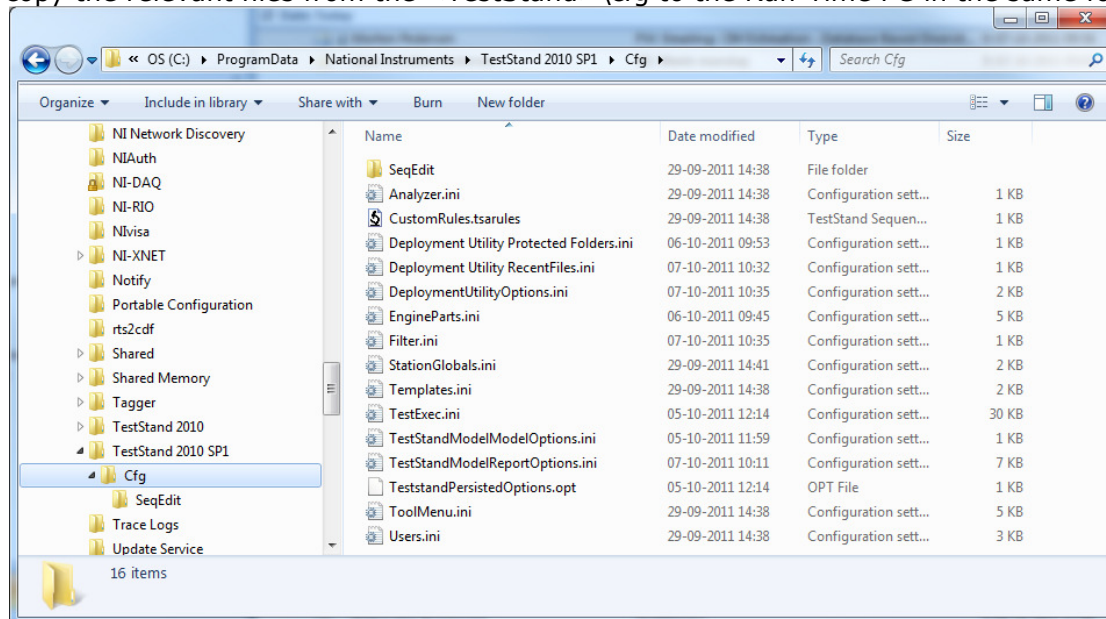


Figure 24: cfg settings on a Windows 7 PC.

## 9.3 FlexStand OI Run-Time

Install the FlexStand Operator Interface Run-Time on the Run-Time PC. The FlexStand OI Run-Time can be downloaded from [www.FlexStand.eu](http://www.FlexStand.eu).

Start FlexStand and check that the simple example starts. The Simple example is provided as a default Operator Interface in the FlexStand Run-Time installation.

Activate licenses if requested or select the evaluation option.

## 9.4 FlexStand Operator Interface and Sequence files

Note: Before copying any LabVIEW files to the Run-Time PC all LabVIEW code must be mass compiled. This is necessary because the Run-Time PC only has a LabVIEW Run-Time installed.

Copy the mass compiled files from the <TestStandPublic>\Userinterfaces folder to the Run-Time PC at the same locations.

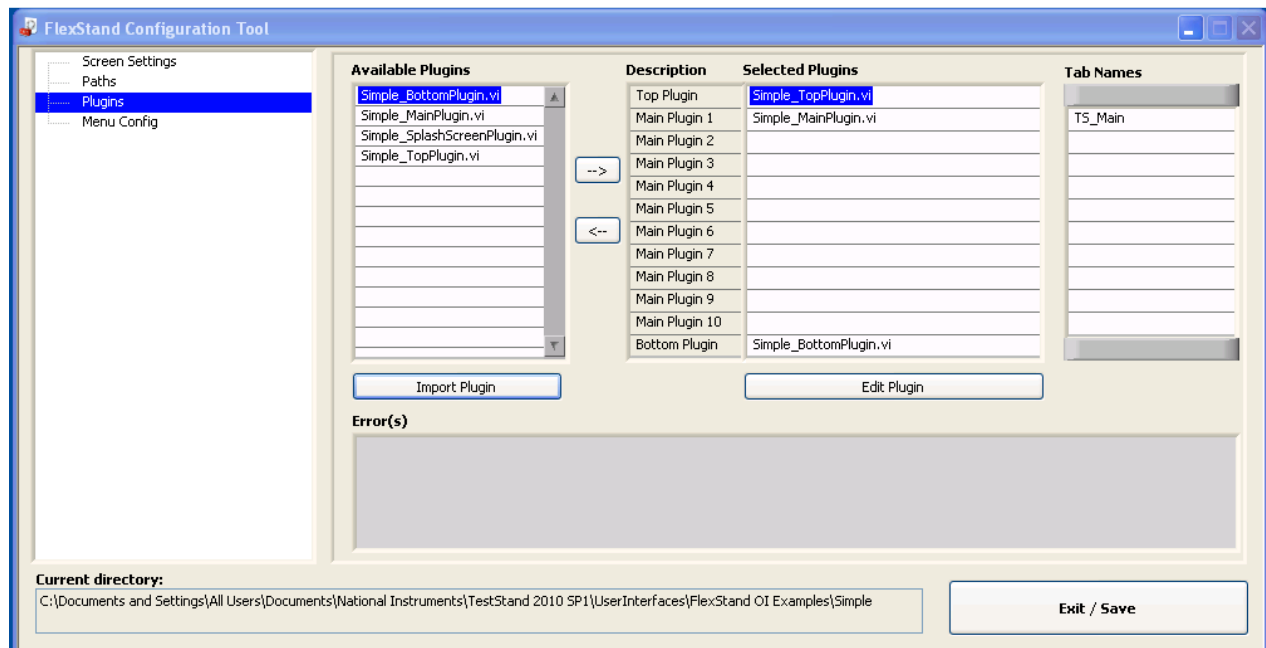
Depending on the LabVIEW code, components from the LabVIEW vi.lib, instr.lib or other LabVIEW basic components may also need to be copied to the Run-Time PC.

## 9.5 Configuring FlexStand

On the Development PC the FlexStand OI can be configured using the Configuration Tool. The configuration tool can be found on the desktop or in the Start menu:

All Programs->CIM->FlexStand OI->FlexStand OI Config Tool.

It is highly recommended to use the configuration tool for making modifications to the FlexStand OI environment but the files can also be modified in a text editor like notepad.



**Figure 25: The FlexStand OI Configuration Tool.**

In order for the Run-Time PC to execute your Operator Interface you need to copy the FlexStandOI.ini file to the Run-Time PC or modify the local version of the file on the Run-Time PC.

'FlexStandOI.ini' is located in the folder: <TestStandPublic>\UserInterfaces\FlexStand OI.

All other components should already have been copied as described in section 9.4.

## 10 Upgrade from old versions

If you already have a FlexStand OI license you can upgrade to the latest version at a reduced cost. Please send an e-mail with your current license number to [info@cim.as](mailto:info@cim.as) and please indicate the version number of the FlexStand OI you want to upgrade to.

## 11 Support

For support information, refer to [www.flexstand.eu](http://www.flexstand.eu) for access to Support, FAQ, download and additional information about FlexStand.

Registered users may access their account by logging in on [www.flexstand.eu](http://www.flexstand.eu). When logged into your account you will have access to your customer information and lists of licenses and activations.

For support available at CIM Industrial Systems offices, please send an email to [support.flexstand@cim.as](mailto:support.flexstand@cim.as).

You may also contact CIM Industrial Systems directly at:

CIM Industrial Systems  
Jegstrupvej 96a  
DK-8361 Hasselager  
Denmark

Phone: +45 – 96 84 05 00  
email: [info@cim.as](mailto:info@cim.as)